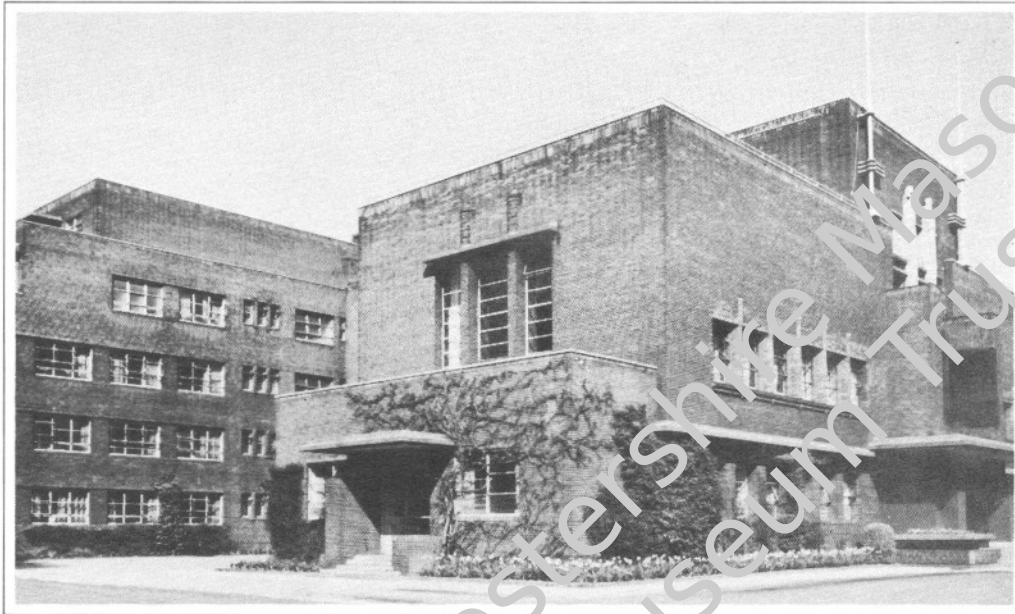




# ROYAL MASONIC HOSPITAL

RAVENS COURT PARK - LONDON - W.6



THE BOARD OF MANAGEMENT GRATEFULLY  
ACKNOWLEDGES THE CO-OPERATION AND  
GENEROUS FINANCIAL SUPPORT OF

.....  
W. BRO. H. E. CLIVE, O.B.E.  
.....  
of the

.....  
WORCESTER INSTALLED MASTERS LODGE NO. 6889  
.....

WHEREBY HE HAS QUALIFIED AND HAS BEEN ENROLLED AS

.....  
PATRON.  
.....

OF THE ROYAL MASONIC HOSPITAL

Dated 21st February 1963

*M. Hilbery*  
CHAIRMAN

*R. Sturges*  
SECRETARY

*Harold D. Stiel*  
TREASURER

